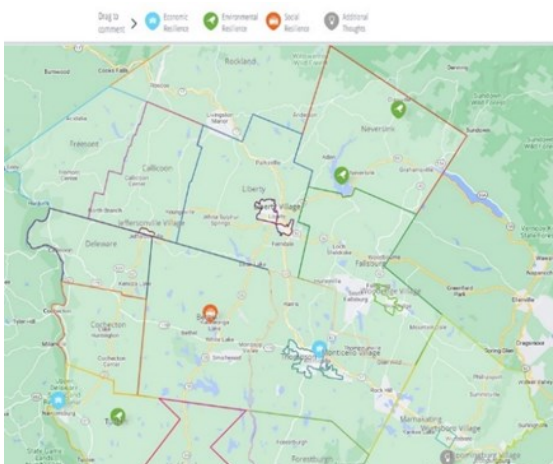


# *“Resilient Sullivan”* Seeks Community Participation

Help our county build capacity to withstand extreme weather events and economic shocks, adapt to a changing environment, and plan new infrastructure with resiliency in mind.



Sullivan County is developing a comprehensive Resiliency Plan, looking at the interconnectedness of the County's natural resources, economy, and people.

Stakeholders and community members are invited to participate in developing shared goals around resiliency. To learn more and participate, please visit [www.resilientsullivan.com](http://www.resilientsullivan.com).

Access the vision board at [Resilient Sullivan Vision Board](#) to share ideas for specific projects or initiatives, and an interactive mapping tool at [Resilient Sullivan Mapping Tool](#) to tag specific places that need attention.

Resilient Sullivan Visioning Board:

<https://mudworkshop.mysocialpinpoint.com/resilientsullivanplan/ideas#/>

Resilient Sullivan Mapping Tool:

<https://mudworkshop.mysocialpinpoint.com/sullivanresiliency#/>

Please make use of these interactive tools to share your thoughts and ideas.

Both tools have easy-to-follow instructions. They will remain open for public participation through July 15, 2023.

“Resilient Sullivan” is being developed with funding provided by the New York State Department of State under Title 3 of the Environmental Protection Fund.